

Summer 2008

Dear Parents of Shorecrabs,

Welcome to the Hayward Shoreline Interpretive Center's Bay Camp program. We are all looking forward to meeting you and your child. The Camp staff has planned a fun and exciting week full of games, activities, hiking, exploring, and much more! A map to the Interpretive Center is included for your convenience.

As you know, camp meets Monday through Friday from 9:30am to 1:30pm. On Monday morning, the first day of camp, you and your child will be met by the Naturalist leading that camp session. Parents are required to stay for the first 15 minutes of camp Monday morning to receive special instructions that you will need to participate in the weeklong program. Camp staff will also be verifying emergency phone numbers, special food or medication needs and answering any of your questions. If you will not be the person picking your child up after camp, please let a staff person know so that we can better monitor your child's safety. Please be aware that camp doors will open no earlier than 9:20am.

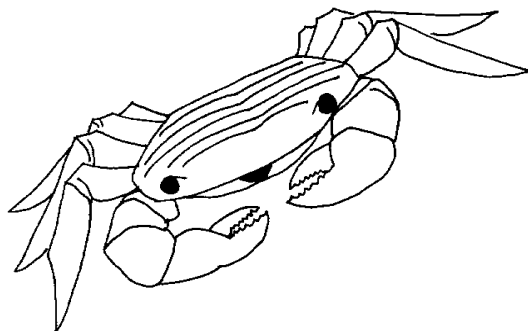
The following information will help you prepare your child to have the best experience possible during the week:

1. Bay Camp kids often get dirty. Please wear old clothes and old tennis shoes. No sandals please. Please make sure your child has sunscreen on, and apply more later.
2. The shoreline can be breezy and cool in summer, even when more inland areas are warm. Please bring a sweatshirt, windbreaker, and a hat or hood.
3. Bring a small water bottle and a sack lunch in an easy to carry daypack. **NO LUNCHABLES, PLEASE.**
4. If a parent is planning on joining us for the day, please contact the camp leader beforehand.

If you have further questions regarding your child's camp experience, please contact me at (510) 670-7270. We are looking forward to seeing you!

Sincerely,

Adrienne De Ponte
Program Director



Hayward Shoreline Interpretive Center
4901 Breakwater Ave., Hayward, CA 94545 (510) 670-7270
www.haywardrec.org - shoreline@haywardrec.org





Hayward Area Recreation and Park District
Hayward Shoreline Interpretive Center
4901 Breakwater Avenue, Hayward CA 94545 (510) 670-7270



Hayward Shoreline Interpretive Center
4901 Breakwater Avenue, Hayward CA 94545
Phone: (510) 670-7270 Fax: (510) 670-7277 Hayshore@aol.com